



WINDOW TECHNOLOGY
DOOR TECHNOLOGY
AUTOMATIC ENTRANCE SYSTEMS
BUILDING MANAGEMENT SYSTEMS



FOR TIMBER, PVC AND ALUMINIUM WINDOWS AND BALCONY-DOORS

Fold&Slide hardware – the new generation



Securing technology for you



Unlimited scope for architectural design

Fully-fledged technology of a new generation of Fold & Slide doors



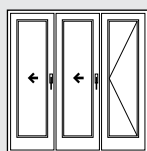
The new Fold&Slide hardware reveals solutions that combine countless benefits. As higher sash weights are permitted, fewer individual elements are required which guarantees maximum opening widths. The larger glass areas allow daylight to flood into the room thus creating an exclusive living atmosphere.

The sashes are precisely and quietly guided in the grooves of the running track by ball bearing supported plastic-coated rolls in the bogie at the bottom and guide roll at the top. Thanks to this technically innovative combination, large and heavy Fold&Slide sashes move safely and effortlessly. This means that window elements up to 6700 mm wide with a single sash weight of up to 130 kg can be used.

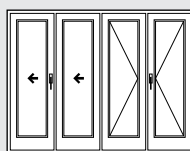
This new Fold&Slide generation offers barrier freedom as a standard solution – every Fold&Slide system can be positioned using the running track to obtain a barrier-free version (depending on the profile).

Emphasis is placed on burglar inhibition at the Fold&Slide element (among others) where the screw connection of the sash hinges is concealed and a UNI-JET central locking system is installed at each individual sash.

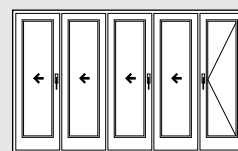
Fold&Slide hardware is used in the public sector and also particularly in the private sector – e.g. to provide barrier-free access in a private apartment to a terrace or the conservatory. The open sashes can be parked to the side in a space saving manner, e.g. as an optimum solution for the transition in a restaurant from inside to outside.



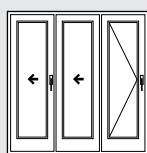
Pattern 321 [1]
2 Fold&Slide sashes
1 Turn-Only sash



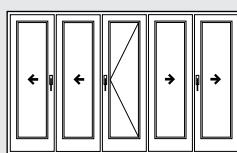
Pattern 431 [2]
2 Fold&Slide sashes
1 Turn-Only dummy mullion sash,
1 Turn-Only sash



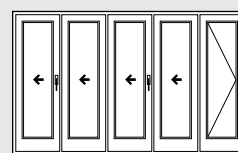
Pattern 541 [1]
4 Fold&Slide sash
1 Turn-Only sash



Pattern 330
2 Fold&Slide sashes
1 Turn-Only sash

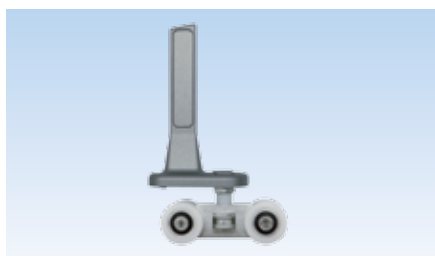


Pattern 532
4 Fold&Slide sash
1 Turn-Only sash

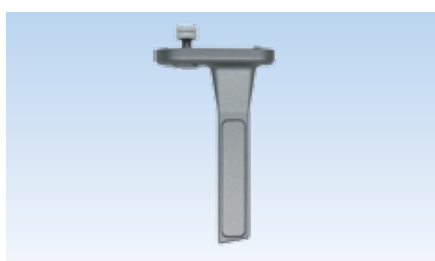


Pattern 550
4 Fold&Slide sash
1 Turn-Only sash

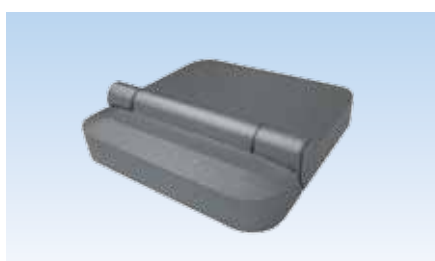
- [1] Passage leaf also as Tilt&Turn sash
 - with sash hinges and UNI-JET Turn-Only locking system
 - with UNI-JET Turn-Only hardware
- [2] Passage leaf also as Tilt&Turn sash
 - with sash hinges and UNI-JET Turn-Only hardware
 - with UNI-JET Turn-Only hardware
- [3] A passage leaf is recommended, especially for use in winter



Bogie at bottom with 6 ball bearing supported plastic coated rolls



Top guide roll with 2 ball bearing supported plastic coated rolls



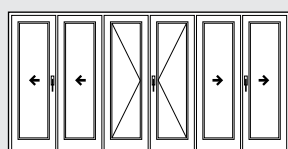
Sash hinge with concealed screw connection

Advantages of new generation of Fold&Slide hardware system:

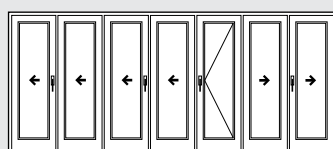
- Elements with a sash weight of up to 130 kg can be manufactured with the new GU hardware – this is ideal for even larger glass surfaces that can be safely moved with fewer sashes
- Bottom bogie with 6 ball bearing supported plastic coated rolls (and 2 more on the top guide rolls) ensure that even heavy sashes can be guided smoothly and quietly
- Sash widths of up to 1000 mm are possible with GU hardware; large element widths of up to 6700 mm can be achieved
- The ferGUard* silver surface sealing offers lasting corrosion protection
- This hardware system has made it possible to implement the new Gretsch-Unitas design line systematically, which is reflected in the sash hinges and pivot rests
- The pivot rests and sash hinges are available in the silver (-1), dark brown RAL 8022 (-5) and white (-7) surface finishes

Fold&Slide hardware			
	Wood	PVC	Aluminium
Description	GU-923	GU-923	GU-823
Sash weight [kg]*	up to 130	up to 130	up to 130
Sash width [mm]*	1000	1000	1000
Sash height*	2350	2350	2400
Number of sashes*	2-7	2-7	2-7

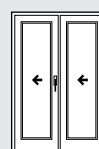
* depends on the processing guidelines of the profile manufacturer



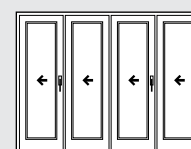
Pattern 633
4 Fold&Slide sash
1 Turn-Only dummy mullion sash,
1 Turn-Only sash



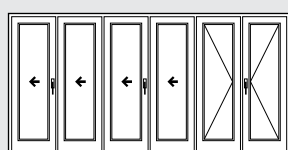
Pattern 743
6 Fold&Slide sashes
1 Turn-Only sash



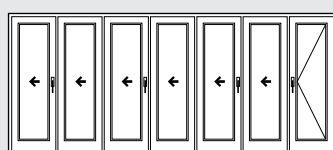
Pattern 220 [3]
2 Fold&Slide sashes



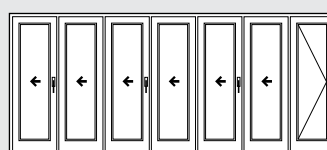
Pattern 440 [3]
4 Fold&Slide sashes



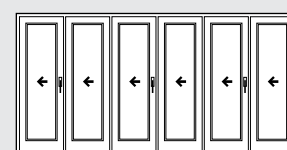
Pattern 651 [2]
4 Fold&Slide sash
1 Turn-Only dummy mullion sash,
1 Turn-Only sash



Pattern 761 [1]
6 Fold&Slide sashes
1 Turn-Only sash



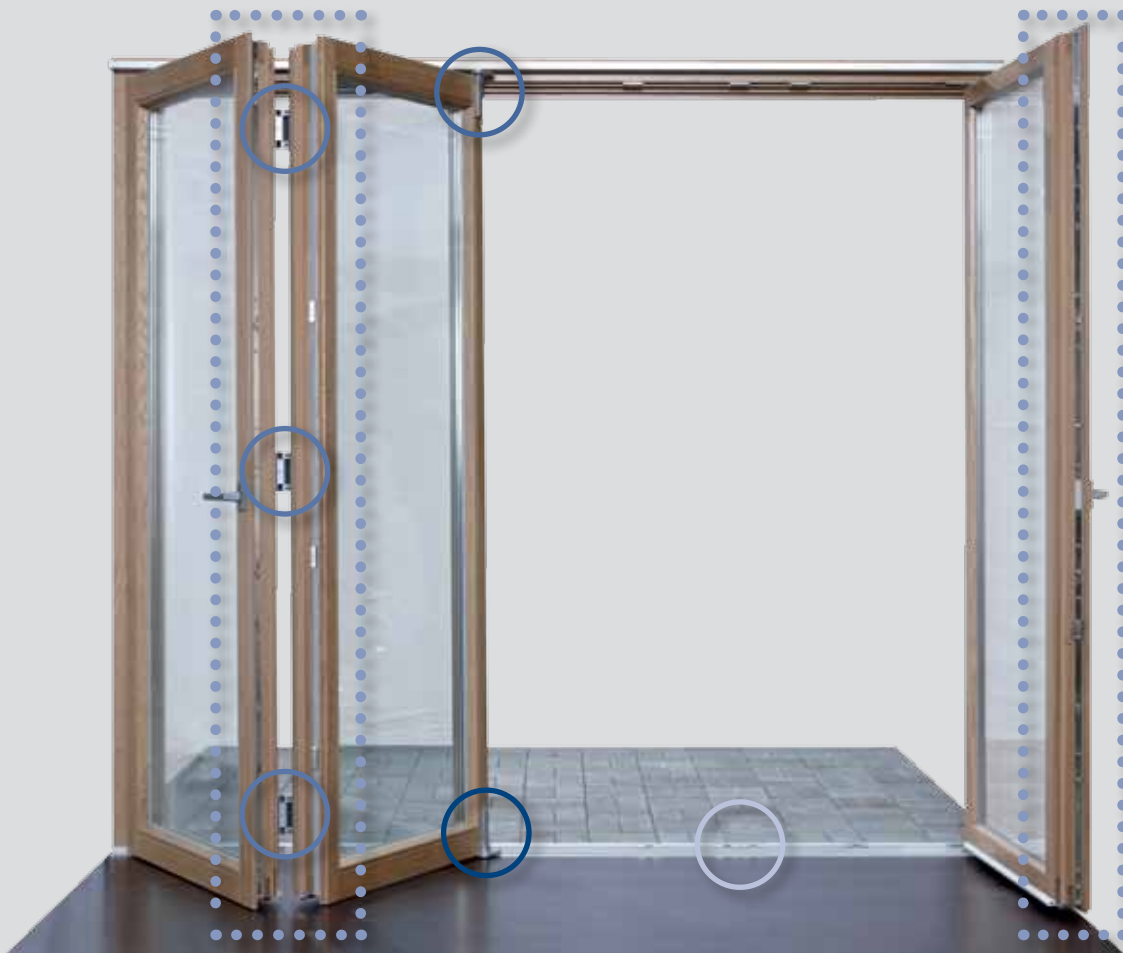
Pattern 770
6 Fold&Slide sashes
1 Turn-Only sash



Pattern 660 [3]
6 Fold&Slide sashes

Innovative architectural hardware at a glance

The new generation of Fold&Slide elements



Bottom bogie:
sash weights up to 130 kg;
6 ball bearing supported plastic-coated rolls

Safety and convenience during operation of all sash sizes!



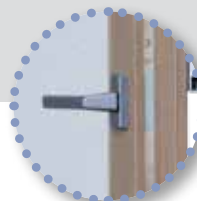
Guide roll at top:
2 ball bearing supported plastic-coated rolls

Quiet and effortless movement of large and heavy sashes!



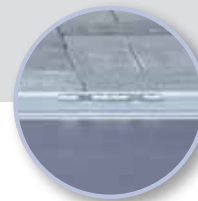
Sash hinges of pivot rests:
Fully concealed screw connection; adjustable horizontal and vertical position

Increased burglar inhibition & optimum installation conditions!



UNI-JET Tilt&Turn central locking system:
Individual sashes can be attached; use of standard components and UNI-JET Concealed

Increased burglar inhibition & reduced warehouse overheads!



GU system threshold:
barrier-free use is possible depending on profile

Suitable for barrier-free construction in compliance with DIN 18040

Suitable for barrier-free construction in compliance with 



Sashes weighing up to 130 kg can be moved safely and conveniently using an innovative architectural hardware

Unique combination of bogie and guide rolls

The new generation of Fold&Slide hardware with a permissible sash weight of 130 kg can reach element widths of up to 6700 mm. More glass can be incorporated in window elements with large sash widths of up to 1000 mm which allows light to flood into rooms.

Once opened, the sashes can be easily and conveniently moved to the side and parked. This allows unrestricted use of the internal living space and outdoor terrace space and also blurs the boundaries between the two.

Six plastic-coated ball bearing supported rolls mounted in each bottom bogie guide the sash precisely and quietly in the three grooves of the running track. The guide rolls at the top of the sash also feature two ball bearing supported plastic-coated rolls. Thanks to this unique combination, even large and heavy Fold&Slide elements can be moved safely and effortlessly.

A brush seal seals the guide track on the floor which prevents dirt entering the running track.



The guide roll at the top in combination with the bottom bogie ensures that sashes can be operated quietly and effortlessly

Increased burglar inhibition

The screw connection of the sash hinges provides increased burglar inhibition and is elegantly concealed by metal cover caps. These caps can only be removed when the sash is in the open position.

The GU sash hinges can for the first time be adjusted in two dimensions, i.e. horizontally and now also vertically.

The central locking system, which can be mounted on each individual sash, is another way to optimise burglar inhibition.

The optionally available opening and locked status monitoring satisfies more stringent security requirements. If the magnetic field that forms the connection between the components under surveillance is interrupted, this is signalled via the alarm control unit.



Increased burglar inhibition due to concealed screw connection of sash hinges

Barrier-free living

Space for unlimited possibilities



Barrier-free construction according to DIN 18040

The meaning of "barrier freedom" in the true sense goes far beyond the notion of making public and private rooms accessible to persons with physical limitations e.g. making public and private spaces available to wheelchair users so they can access these independently without the assistance of others. In fact, it also defines situations that suddenly arise and can frequently be encountered by anybody in everyday life in which personal mobility is restricted by the specific situation. This could be a person with a pushchair, or an injured sportsperson on crutches or someone travelling with heavy bulky luggage.

Barrier-free construction increases safety and added convenience for everyone: irrespective of age and health, the usefulness of a building and therefore quality of life is significantly improved. This makes barrier-free construction not only a social responsibility, it also makes a significant contribution towards safeguarding the future of a building and thus protecting the investment in the long term. Barrier-freedom is becoming a basic requirement to be met by a building and products that satisfy these requirements will achieve commercial success.

Our new Fold&Slide hardware system satisfies these requirements in every respect and is even available as a standard solution: each Fold&Slide system can have a barrier-free design (depending on the profile) without requiring additional components such as a special threshold.

The flat GU system threshold can provide a maximum passage width without obstructions. Frame parts that anchor the sash to the floor do not represent a tripping hazard by projecting out of the floor when the sashes are parked at the side and instead recessed in the threshold in the floor.

Even heavy large sashes can be effortlessly opened and moved safely and to the side thanks to ball bearing supported, plastic-coated rolls in the bottom bogie and the top guide roll. Not only older persons or persons with restricted mobility appreciate this, but also service employees in the gastronomy industry for example, who value fast, short and obstruction-free routes in the outdoor area of the restaurant.



Example of barrier freedom in a restaurant with transition to the outdoor area: gastronomy service staff appreciate being able to reach their guests quickly without obstructions



Even heavy large sashes can be effortlessly and safely pushed to one side in order to achieve the maximum obstruction-free passage width



A threshold which is easy for wheelchair users or persons with restricted mobility to negotiate without obstructions, e.g. upwards projecting frame parts that anchor the sash to the floor

Suitable for barrier-free construction in compliance with



Installation and quality

Tried-and-tested central locking system and adjustable pivot rest / sash hinges guarantee optimum installation conditions



Central locking system with Cleverle: simplified inventory management due to tried-and-tested UNI-JET modular principle

Central locking system

The central locking components required for the elements come from the successful UNI-JET Tilt&Turn range. In this case, face-fixed or even fully concealed stays and pivot rests can be used. All locking points feature automatic cams which provide ingenious clearance compensation.

The different climatic conditions in the summer and winter frequently lead to changes in the locking cam settings. The Cleverle adapts automatically to the varying rebate clearances. This significantly reduces the need for adjustment during fabrication and when installed.

By using standard components, this significantly reduces the inventory costs of fabricators of timber, plastic or aluminium window elements.



Height-adjustable sash hinge, view from outside; the screw connection is concealed from the outside which increases burglar inhibition

Pivot rest

Pivot rests with 3 supporting bolts and 3 screw fixing points ensure a precise stop at the sash. The sash hinges are equipped with infinitely adjustable bearing pins and are therefore ideal for adjusting the sash to a wide range of profile systems.

Ample range of adjustment allows adjustments in the horizontal and vertical position.

Horizontal adjustment range + 5.0 / - 1.5 mm

Vertical adjustment range + 2.0 / - 2.0 mm

A scale helps make these adjustments quickly and precisely which is a huge advantage with existing elements in projects.

All profile systems with standard sash hinges and pivot rests can have overlap thicknesses of between 15 and 26 mm without packing shims!

Once installed, metal cover caps are fitted on the sash hinges and are extremely easy to remove again in order to make adjustments at the open element.



Height-adjustable sash hinges, view from inside; the caps of the sash hinges can only be removed in the open position



WINDOW TECHNOLOGY
DOOR TECHNOLOGY
AUTOMATIC ENTRANCE SYSTEMS
BUILDING MANAGEMENT SYSTEMS

Gretsch-Unitas GmbH
Baubeschläge
Johann-Maus-Str. 3
71254 Ditzingen, Germany
Tel. +49(0)7156 301-0
Fax +49(0)7156 301-77980

BKS GmbH
Heidestr. 71
42549 Velbert, Germany
Tel. +49(0)2051 201-0
Fax +49(0)2051 201-9733

www.g-u.com

Securing technology for you

